

No art here,  
covered by flap

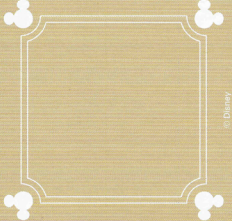
**CODENAMES**  
Disney

No art here,  
covered by flap

© Disney/Pixar



© Disney/Pixar



© Disney



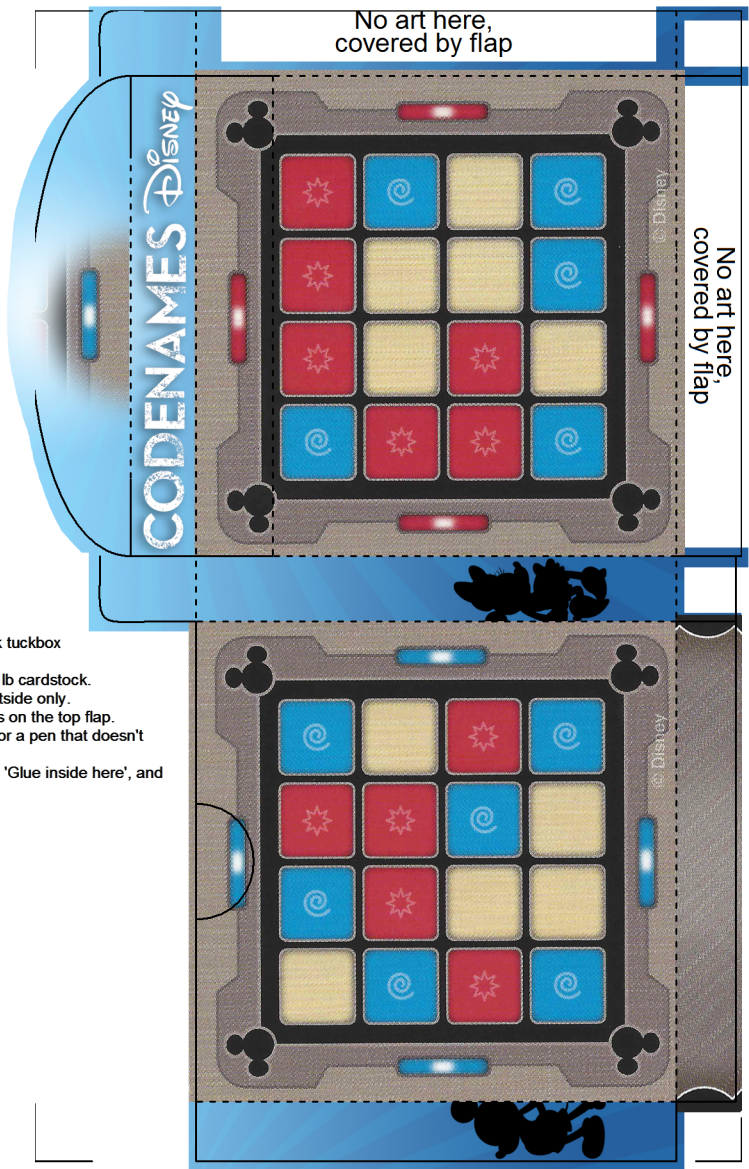
© Disney/Pixar



© Disney/Pixar

Amanda and Leon's NanDeck tuckbox  
2.7x2.7x1.23

- Print at 100% (no scaling) on 110 lb cardstock.
- Place adhesive laminate on outside only.
- Cut on solid lines, dont forget the cuts on the top flap.
- Crease on dotted lines with a bone-folder or a pen that doesn't write.
- Put glue or double-sided tape where it says 'Glue inside here', and press together.



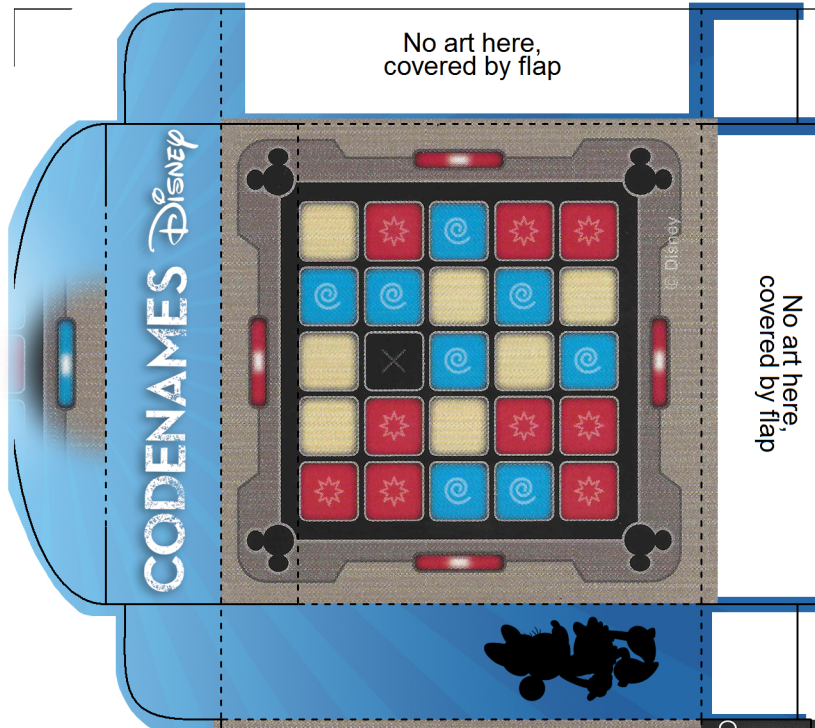
No art here,  
covered by flap

No art here,  
covered by flap

Amanda and Leon's NanDeck tuckbox  
2.5x2.5x.34

- Print at 100% (no scaling) on 110 lb cardstock.
- Place adhesive laminate on outside only.
- Cut on solid lines, dont forget the cuts on the top flap.
- Crease on dotted lines with a bone-folder or a pen that doesn't write.
- Put glue or double-sided tape where it says 'Glue inside here', and press together.

No art here,  
covered by flap

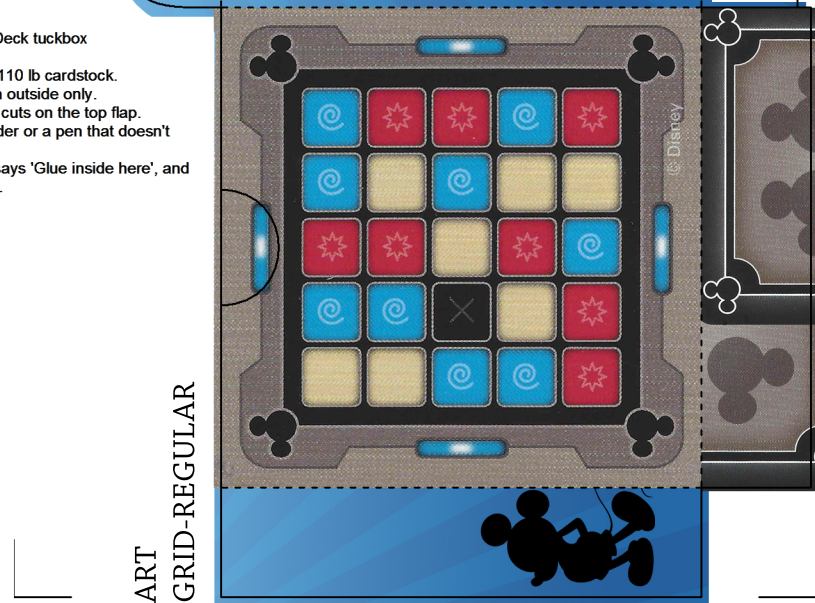


No art here,  
covered by flap

Amanda and Leon's NanDeck tuckbox  
2.5x2.5x.6

- Print at 100% (no scaling) on 110 lb cardstock.
- Place adhesive laminate on outside only.
- Cut on solid lines, dont forget the cuts on the top flap.
- Crease on dotted lines with a bone-folder or a pen that doesn't write.
- Put glue or double-sided tape where it says 'Glue inside here', and press together.

ART  
GRID-REGULAR

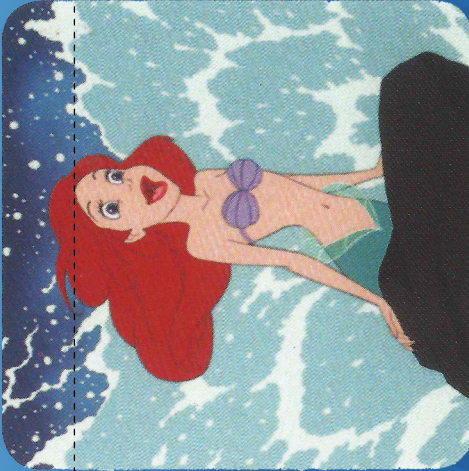




ART  
WORD  
VAR #A

No art here,  
covered by flap

# CODENAMES Disney



No art here,  
covered by flap



Amanda and Leon's NanDeck tuckbox  
2.5x2.5x1.4

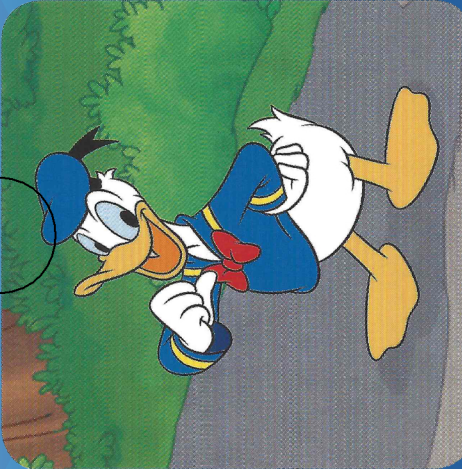
-Print at 100% (no scaling) on 110 lb cardstock.

-Place adhesive laminate on outside only.

-Cut on solid lines, dont forget the cuts on the top flap.

-Crease on dotted lines with a bone-folder or a pen that doesn't write.

-Put glue or double-sided tape where it says 'Glue inside here', and press together.





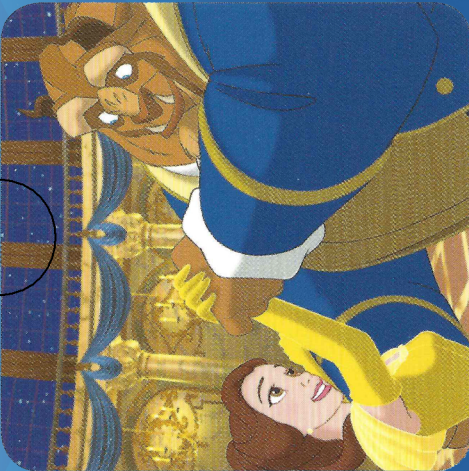
ART  
WORD  
VAR #B

No art here,  
covered by flap

# CODENAMES Disney



No art here,  
covered by flap



Amanda and Leon's NanDeck tuckbox  
2.5x2.5x1.4

-Print at 100% (no scaling) on 110 lb cardstock.

-Place adhesive laminate on outside only.

-Cut on solid lines, dont forget the cuts on the top flap.

-Crease on dotted lines with a bone-folder or a pen that doesn't write.

-Put glue or double-sided tape where it says 'Glue inside here', and press together.