

ART COVER

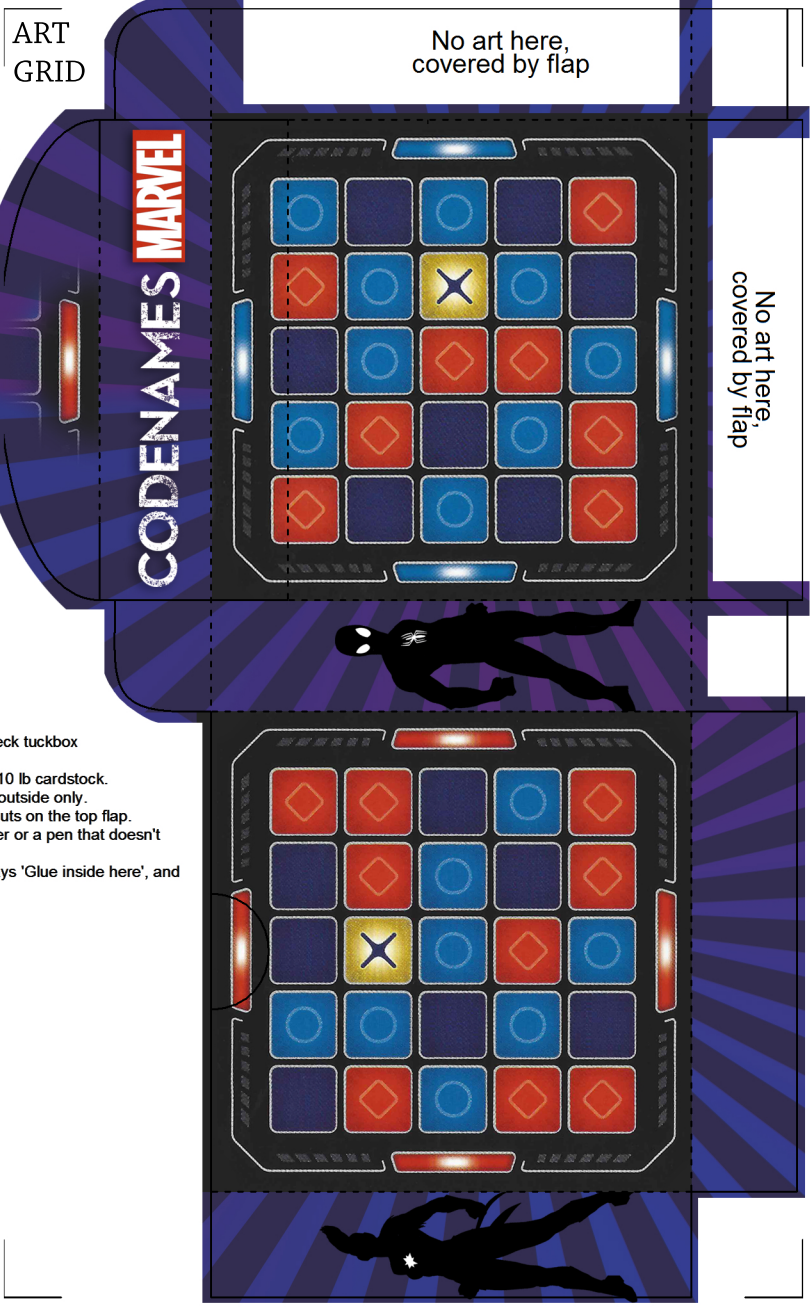
No art here, covered by flap

Amanda and Leon's NanoDeck tuckbox

2.7x2.7x1.24

- Print at 100% (no scaling) on 110 lb cardstock.
- Place adhesive laminate on outside only.
- Cut on solid lines, don't forget the cuts on the top flap.
- Crease on dotted lines with a bone folder or a pen that doesn't write.
- Put glue or double-sided tape where it says 'Glue inside here', and press together.





ART
GRID

No art here,
covered by flap

CODENAMES **MARVEL**

No art here,
covered by flap

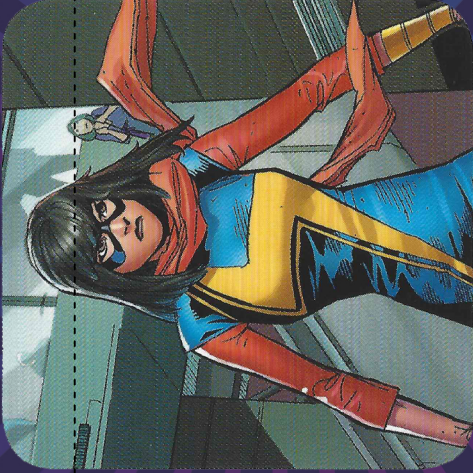
Amanda and Leon's NanDeck tuckbox
2.5x2.5x.58

- Print at 100% (no scaling) on 110 lb cardstock.
 - Place adhesive laminate on outside only.
 - Cut on solid lines, dont forget the cuts on the top flap.
 - Crease on dotted lines with a bone-folker or a pen that doesn't write.
- Put glue or double-sided tape where it says 'Glue inside here', and press together.

ART
WORD
VAR #A

No art here,
covered by flap

Amanda and Leon's NerdDeck tuckbox
2.5x2.5x1.39
-Print at 100% (no scaling) on 110 lb cardstock.
-Place adhesive laminate on outside only.
-Cut on solid lines, dont forget the cuts on the top flap.
-Crease on dotted lines with a bone-folder or a pen that doesn't
write.
-Put glue or double-sided tape where it says 'Glue inside here', and
press together.



CODENAMES



ART
WORD
VAR #B

No art here,
covered by flap

Amanda and Leon's HandDeck tuckbox
2.5x2.5x1.39
-Print at 100% (no scaling) on 110 lb cardstock.
-Place adhesive laminate on outside only.
-Cut on solid lines, don't forget the cuts on the top flap.
-Crease on dotted lines with a bone folder or a pen that doesn't
write.
-Put glue or double-sided tape where it says 'Glue inside here', and
press together.



CODENAMES

MARVEL

